

# ACCESSORIES AND SERVICES

## SERVICE PEDESTALS

### GENERAL FEATURES

<b>Dimensions</b>	Base, height and width variable depending on the application; heights between 1000mm and 1500mm
<b>Finishing</b>	External finish in anti-corrosive material (pressed plastic, painted aluminum or stainless steel)
<b>Services</b>	Electricity: combinations of single-phase and/or three-phase electrical outlets from 16A to 250A Water: 1/2" to 1" water tap combinations, including hose in appropriate holder
<b>Protection</b>	Equipped with differential switch and circuit breaker per socket for overload prevention
<b>Color</b>	Diversified range and patterns
<b>Manufacturing</b>	CE certified supplier
<b>Accessories and options</b>	Consumption control through analog or digital meters and readers, associated with credit card systems or operation tokens Integration into global infrastructure management systems

### APPLICATIONS

- Fixed structures on land
- Floating pontoons
- Fuel and service docks
- Campgrounds
- Leisure and recreational spaces



## ACCESSORIES AND SERVICES

# MEGA YACHT PEDESTALS

### TECHNICAL SPECIFICATIONS

<b>Structure</b>	Internal chassis in marine aluminum and painted marine aluminum or stainless steel casing
<b>Material</b>	Painted marine aluminum or stainless steel
<b>Power</b>	CEI309 or Marechal sockets between 16A and 600A, single-phase and/or three-phase
<b>Watertightness</b>	IP65



# EV PEDESTALS

### TECHNICAL SPECIFICATIONS

<b>Structure</b>	Painted galvanized steel Surge protection LED lighting
<b>Manufacturing</b>	ISO9001, CE certified supplier
<b>Optional</b>	It is also available as a high-speed unit with one or two IEC 62196 outputs, providing a single or three-phase load between 3.6kW and 22kW



# WALLPOD

### TECHNICAL SPECIFICATIONS

<b>Finishing</b>	Available in a variety of colors
<b>Structure</b>	Non-corrosive material (fiber, stainless steel or aluminum)
<b>Capacity</b>	16amp (3.6kW) or 32amp (7.2 kW) This unit also provides a 13-amp IP65 socket





# ACCESSORIES AND SERVICES

## EMERGENCY PEDESTALS

### TECHNICAL SPECIFICATIONS

**Structure** Classic: Galvanized steel internal chasis and aluminum external chasis  
Quantum: Anodized extruded aluminium body

**Manufacturing** ISO9001, CE certified supplier

**Optional** Life buoy ring, chemical powder fire extinguisher and first aid box, emergency lantern and siren



## EMERGENCY LADDERS

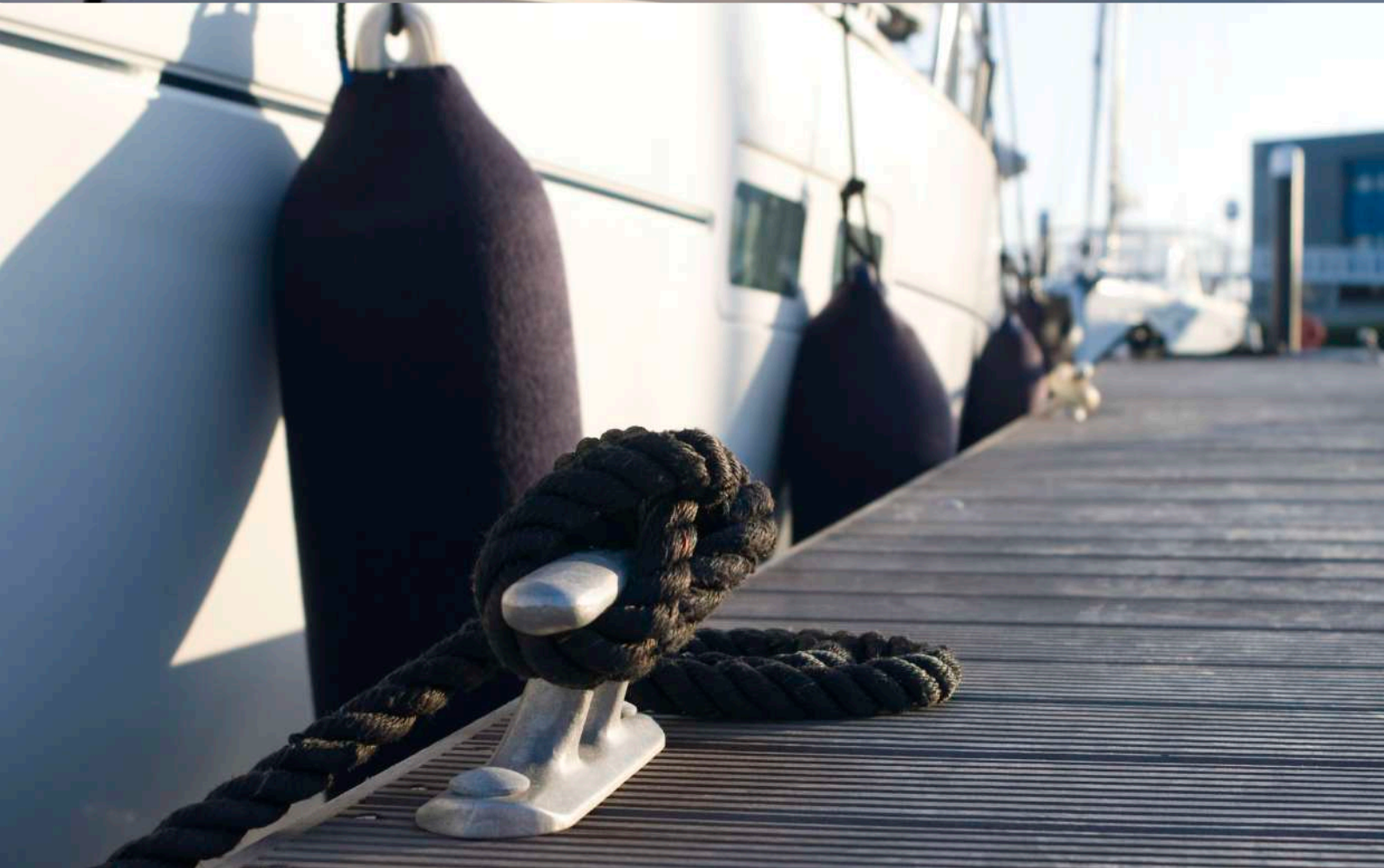
### TECHNICAL SPECIFICATIONS

**Dimensions** Available in various sizes and designs

**Structure** Non-corrosive material (fiber, stainless steel or aluminum)

**Installation** Various types of jetty ladder attachments, all with stainless steel screws





## ACCESSORIES AND SERVICES

# CLEATS AND BOLLARDS

### TECHNICAL SPECIFICATIONS

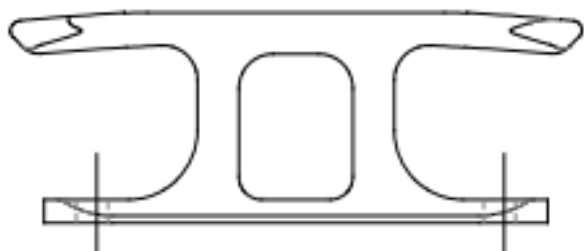
Structure

Cast aluminium

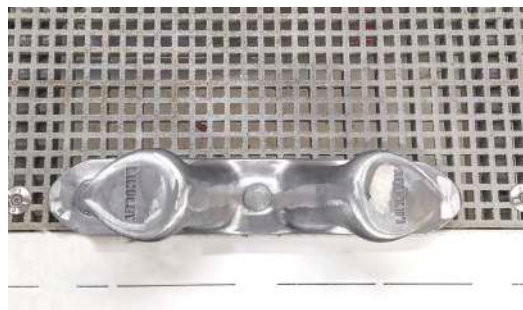
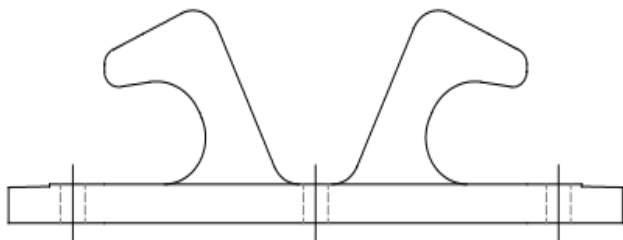
Installation

Fixing by means of stainless steel screwing

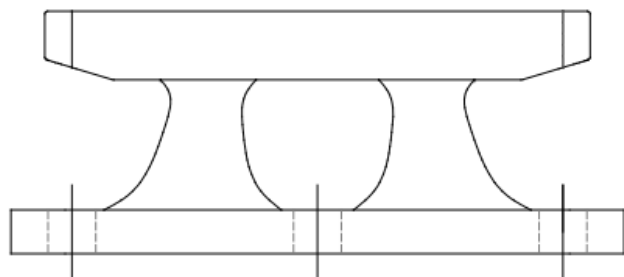
### 3T CLEAT



### 5T BOLLARD



### 8T CLEAT



### 10T BOLLARD

